

# Excel VBA

MGMI 311  
1-Sep-2011

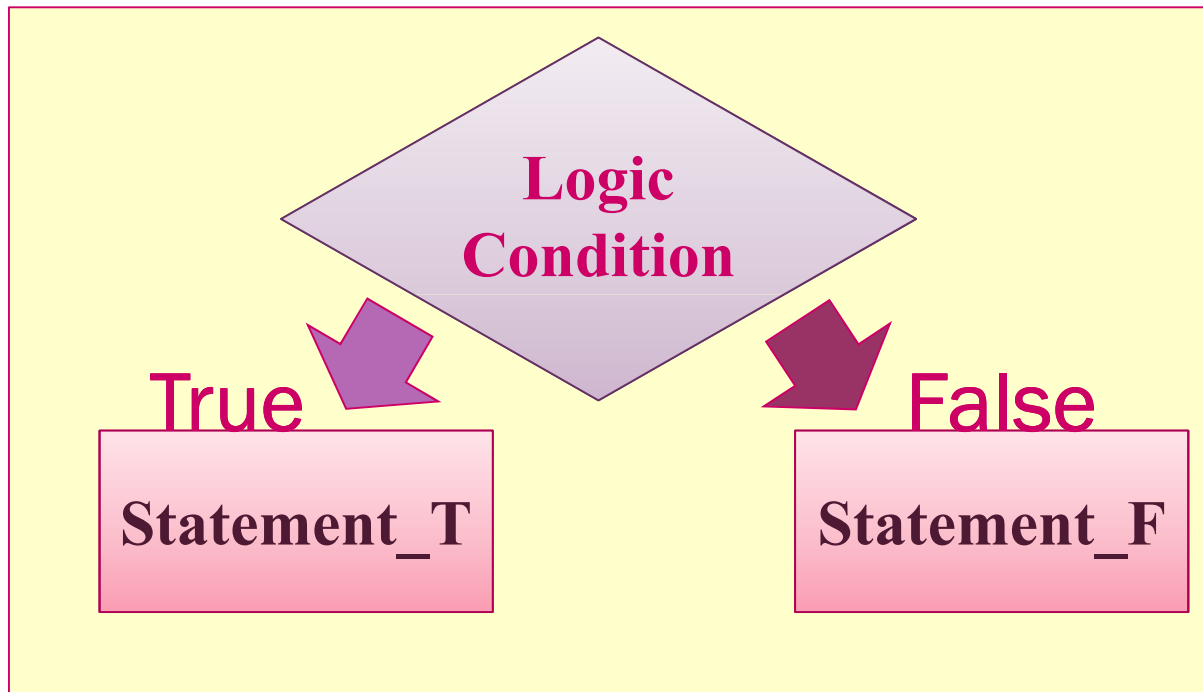


# Control Loops

- ❑ IF -loop
- ❑ SELECT -loop
- ❑ FOR -loop
- ❑ WHILE -loop
- ❑ DO -loop



# IF - Loop



# IF - Loop



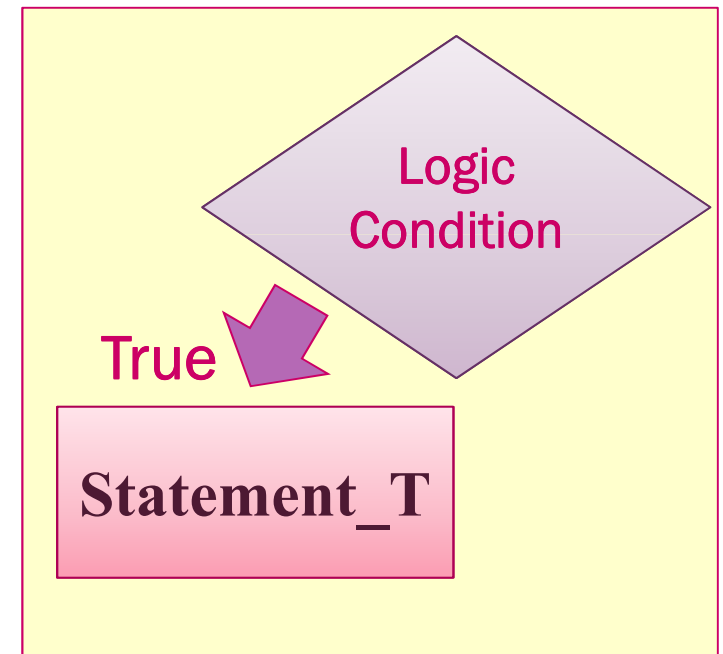
```
If... (Logic Condition) ...Then  
    .. Statement_T ..  
Else  
    .. Statement_F ..  
End If
```



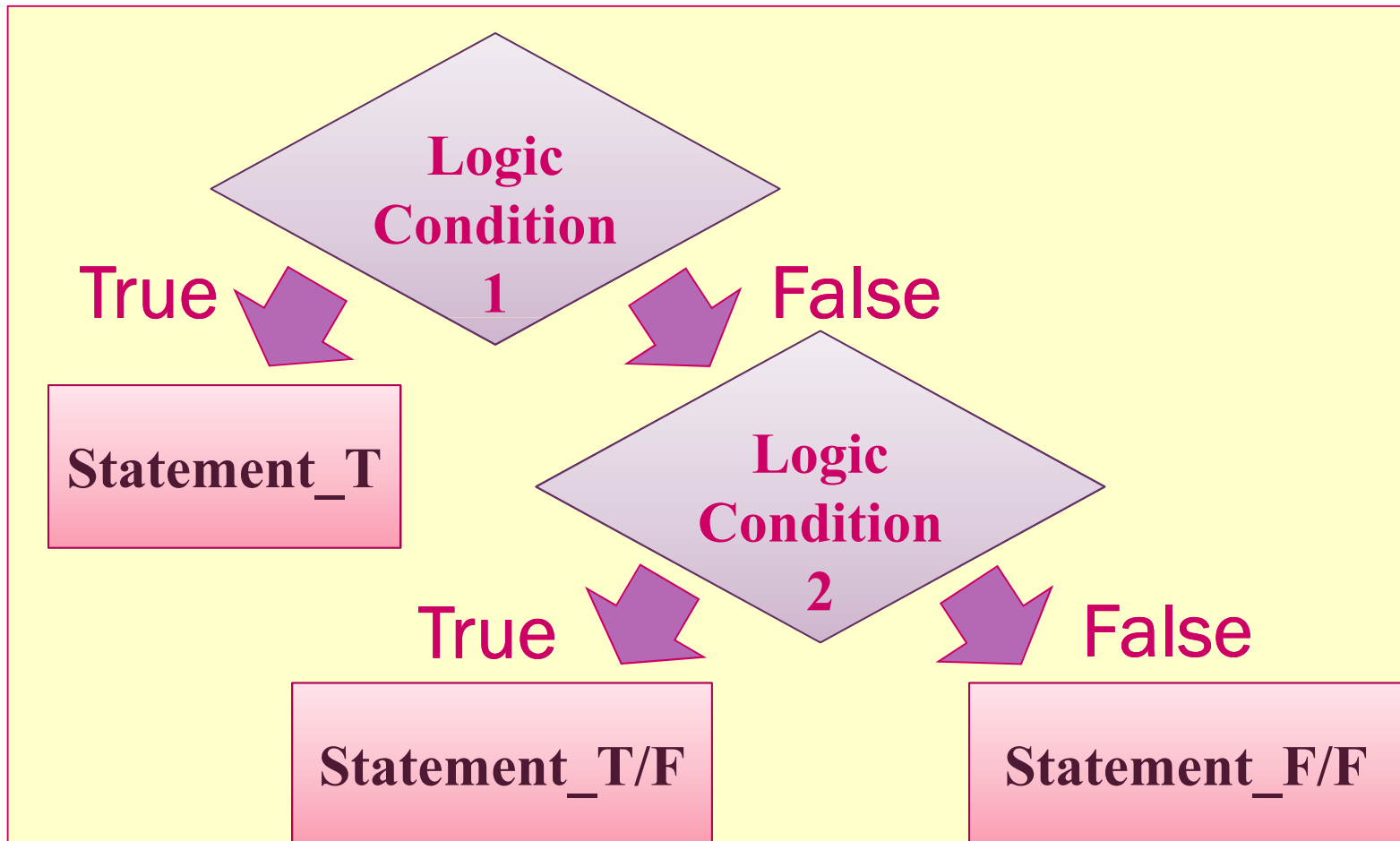
# IF - Loop

No command statement in case of FALSE

```
If... (Logic Condition) ...Then  
    .. Statement_T ..  
End If
```



# IF Loop



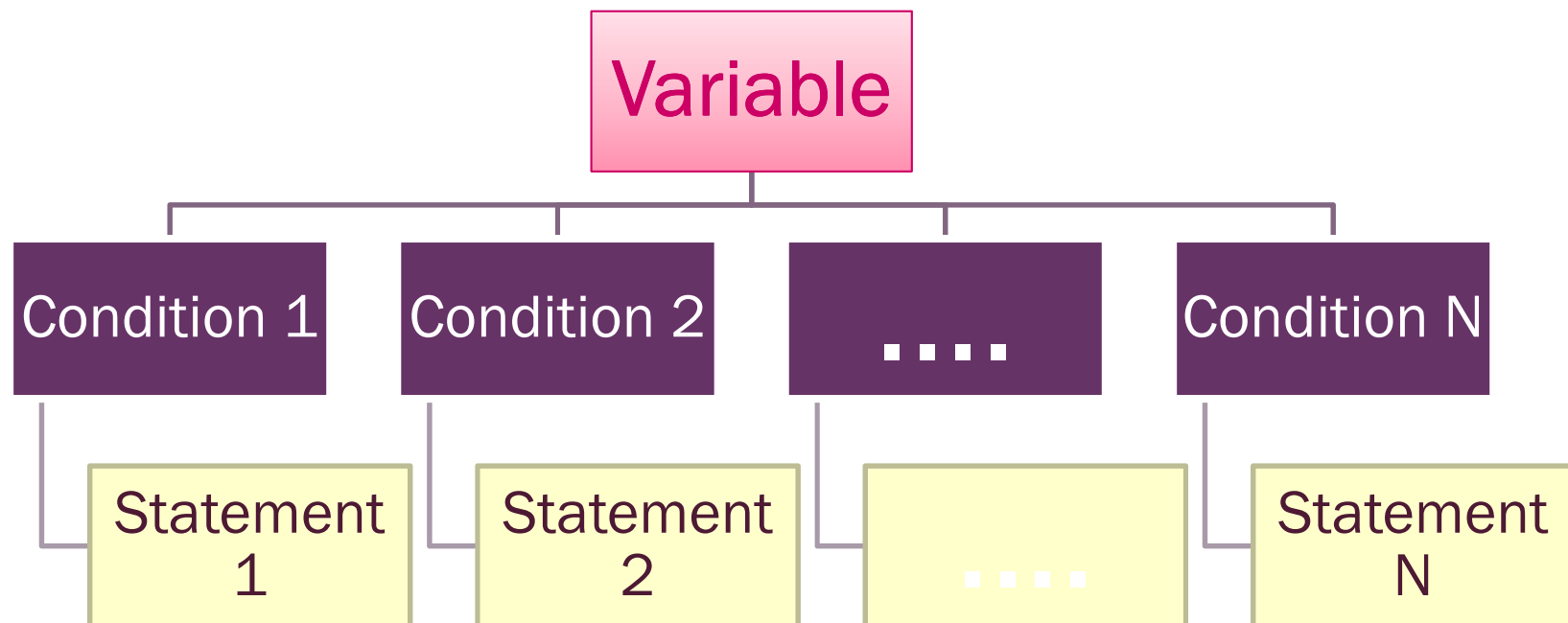
# IF - Loop

IF Loop inside IF loop

```
If... (Logic Condition 1) ..Then
    .. Statement_T..
Elseif ... (Logic Condition 2) ...
    .. Statement_F/T..
Else
    .. Statement_F/F..
End If
```



# SELECT - loop





# SELECT - loop



Select Case Variable

Case Condition(1)

Statement(1)

Case Condition(2)

Statement(2)

...

Case Condition(N-1)

Statement(N-1)

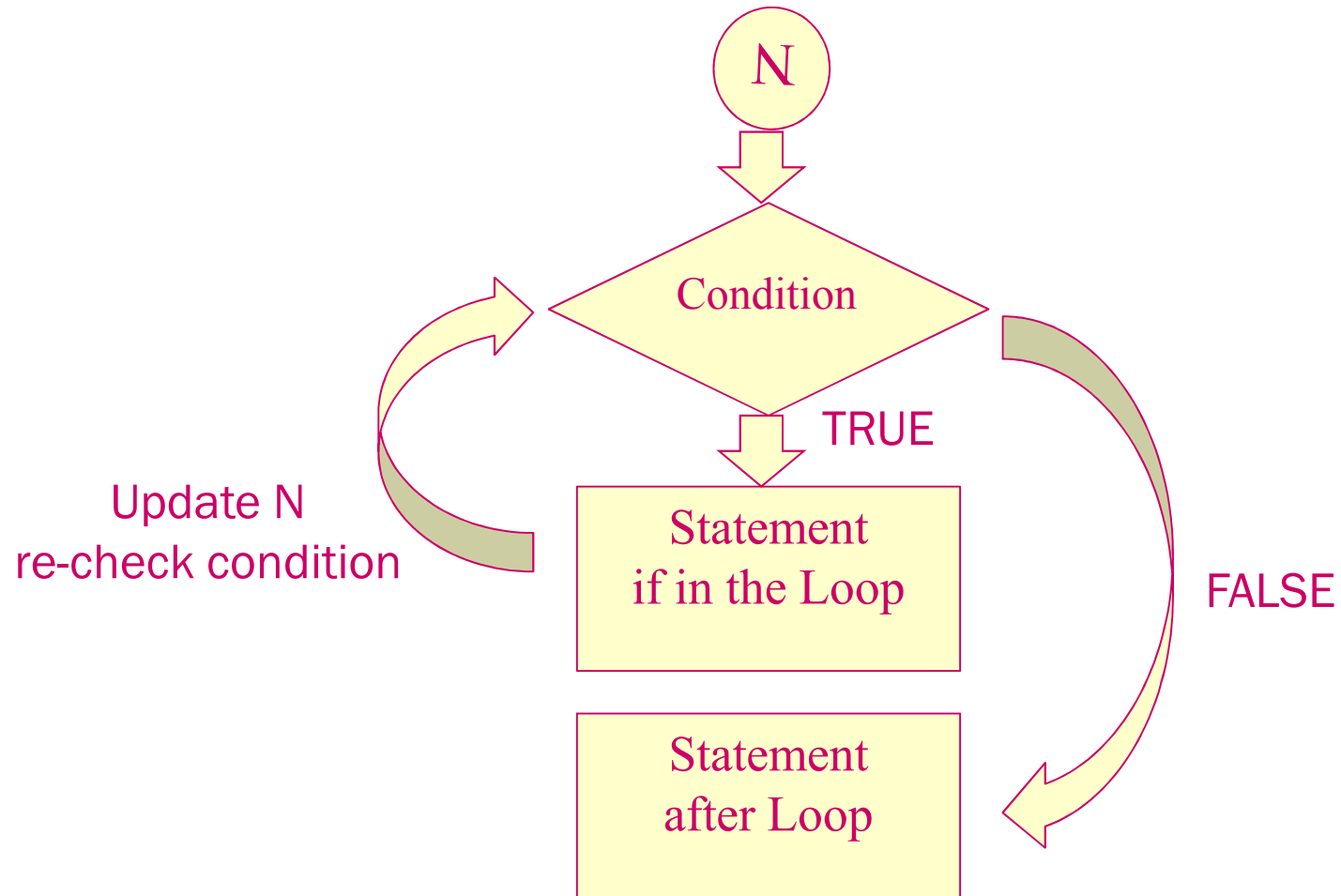
Case Else

Statement(N)

End Select



# FOR - loop



# FOR - loop



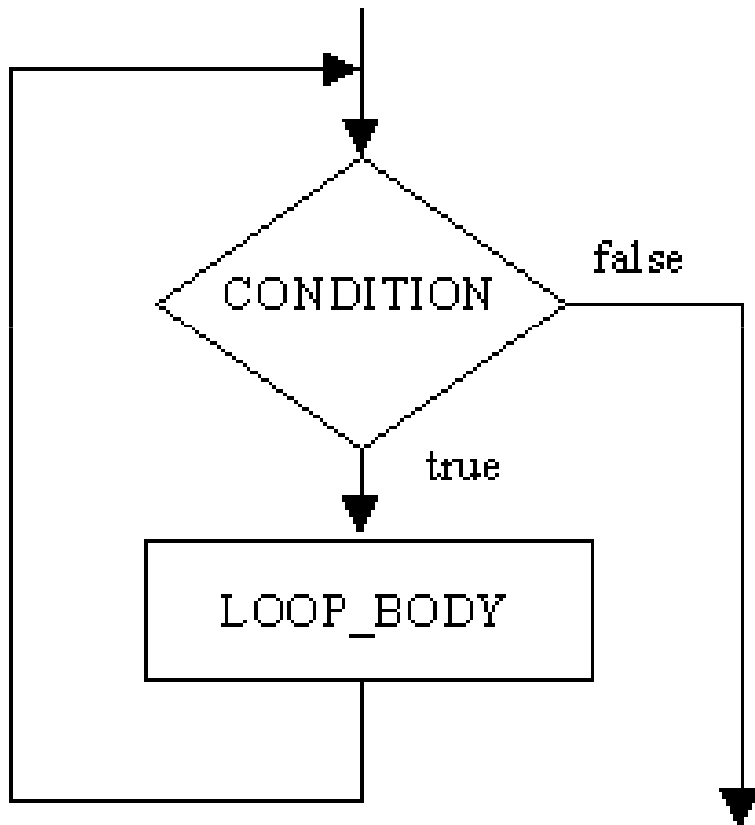
```
For counter = Start TO Finish  
    Statement(s)  
Next
```

=====

Next implies “counter = counter + 1”



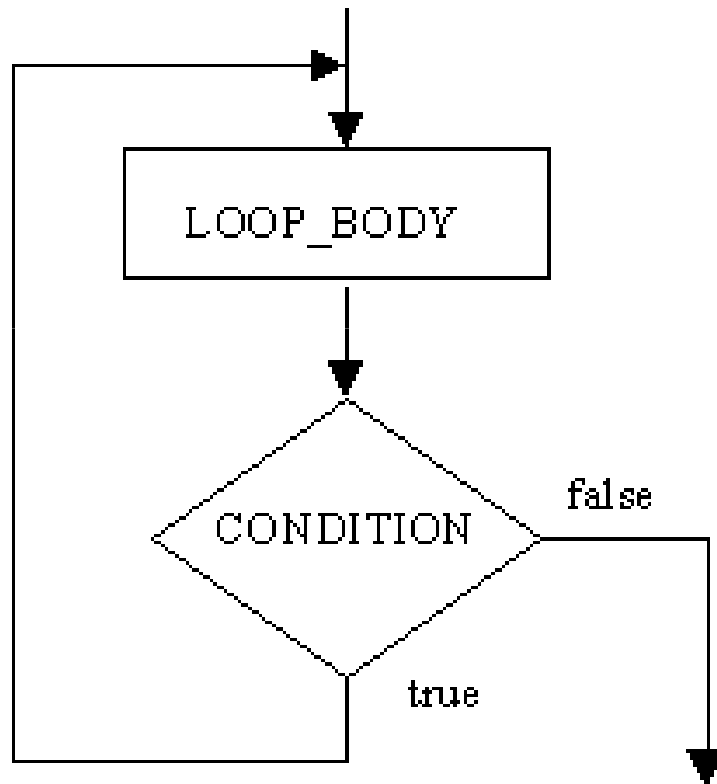
# WHILE - loop



While Condition  
Statement (s)  
Update counter  
Wend



# DO -loop



Do Statement (s)  
Update counter  
Loop While Condition  
(Loop Until Condition)



# Do-loop



- Loop While Condition

↳ Continue condition

- Loop Until Condition

↳ Exit condition

